

CT DEEP **2016**
FISHING REPORT NUMBER 25
9/29/2016



Brown Trout (*Salmo trutta*)



YOU CAN FIND US DIRECTLY ON FACEBOOK. This page features a variety of information on fishing, hunting, and wildlife watching in Connecticut. The address is www.facebook.com/CTFishandWildlife.



INLAND REPORT

Fall Stocking of Trout and Broodstock Atlantic Salmon:

Conditions (especially water temperatures) are improving slowly allowing for trout and salmon to be stocked on a case-by-case basis (hopefully widespread stocking soon). We are monitoring conditions in your favorite lakes, ponds, rivers, and streams. As soon as we can get the fish out – we will. Stay tuned to our Facebook page for daily stocking updates. This week 4,000 Brown Trout were stocked –see “Housatonic River.”

LARGEMOUTH BASS fishing is reported as fair to good.

Places to try include East Twin Lake, Wononskopomuc Lake, Burr Pond, Hatch Pond, Tyler Lake, Congamond Lakes, Candlewood Lake, Lake Housatonic, Lake Lillinonah, Highland Lake, Bantam Lake, Lake Saltonstall, Winchester Lake, Billings Lake, Stateline Pond, Griggs Pond, Dog Pond, Bigelow Pond, Stillwater Lake, Halls Pond, Quaddick Reservoir, Silver Lake (Meriden), Red Cedar Lake and Mudge Pond.

Tournament angler reports are from Amos Lake (tough, 2.79 lb lunker), Aspinook Pond (slow to fair, 2.73 lb lunker), Hopeville Pond (fair for most, with a 5.54 lb lunker), Lake of Isles (slow for most, nothing big with a 1.63 lb lunker), Mansfield Hollow Reservoir (slow to fair, 4 lb lunker, but nothing else of any size), Pachaug Pond (slow for most, but with 6.10 lb & 5.82 lb lunkers and several more fish in the 3-4 lb range), Pickerel Lake (fair to good action, but nothing of any size with only a 1.32 lb lunker, fish averaged a lb apiece), Rogers Lake (fair action, 3.75 lb lunker), Candlewood Lake (fair to good, 3.91 lb & 3.90 lb lunkers), and Lake Lillinonah (slow to fair).

SMALLMOUTH BASS action reported at West Hill Pond, Bantam Lake, Candlewood Lake and Highland Lake. River smallies are providing some action on the Housatonic River (Upper), Quinebaug River and Naugatuck River. **Tournament angler** reports are from Candlewood Lake (fair, 4.89 lb lunker), Lake Lillinonah (slow to fair, 3.09 lb lunker), and Pachaug Pond (a few in the bags).

NORTHERN PIKE catches continue to be reported from the Housatonic River, Quaddick Lake, Bantam Lake, Pachaug Pond, and CT River (Haddam).

Share the Experience—Take Someone Fishing • APRIL 9 Opening Day Trout Fishing

2016 CONNECTICUT

ANGLER'S GUIDE

INLAND & MARINE FISHING

YOUR SOURCE

For CT Fishing Information

» New Marine Regulations for 2016
See page 58

CONNECTICUT BUREAU OF NATURAL RESOURCES
1866 - 2016

Connecticut Department of Energy & Environmental Protection

www.ct.gov/deep/fishing

Only 1 month left to get your best “shot” into the Angler’s Guide Cover contest. Email your high quality photo to:
deep.inland.fisheries@ct.gov by November 1.

BLACK CRAPPIE fishing is picking up with reports of fish coming from Lake Saltonstall, and Park Pond.

CARP- Medium size carp being landed around Hartford in the CT River. Other carp hot spots include; Lake Housatonic, Housatonic River (New Milford), Quinebaug River (Jewitt City), and Batterson Park Pond. The Connecticut River CARP Tournament is coming- <http://www.carptournamentseries.com/site/>

WALLEYE- Look for deep drop offs and structure. For some action try Squantz Pond, Batterson Park Pond, Beach Pond, Mashapaug Lake, Gardner Lake, Mount Tom Pond, Lake Saltonstall, West Thompson Reservoir, Saugatuck Reservoir or Lake Zoar.

PANFISH are providing excellent late summer action throughout the state. Use worms, grubs, jigs or small poppers for them. Small local ponds are often great places, for larger waters try include Dog Pond, Mohawk Pond, Miller Pond, Gorton Pond, Lake Hayward, Babcock Pond, Bishop Swamp Pond, Griggs Pond, Tyler Pond, Crescent Pond, Red Cedar Lake and Long Pond.

TROUT- FALL TROUT STOCKING UPDATE: Conditions are improving slowly allowing for some trout to be stocked on a case-by-case basis (hopefully widespread stocking may be possible soon). Stay tuned to our Facebook page and website for daily stocking updates.

RIVERS & STREAMS - Conditions are starting to improve. Temperatures are dropping, but the lack of significant rain continues to keep many streams near record low flow levels (see stream flow graphic on page).

Farmington River – Fishing continues to be good and the conditions for this weekend should be good. West Branch flows are clear and moderately low, currently 60 CFS at Riverton with the Still River adding a mere 6.9 CFS, and water temperatures are in the low 60's°F.

Hatches/patterns include Tricos (#20-26), *Isonychia bicolor* (#10-14, fast water, afternoon/evening), Blue Wing Olives (*Drunella* & *Baetis* spp., #18, 20-24, mid-late afternoon), Cahill (#12-14), White Fly (#12-14; just after dark), Needhami, Caddis (tan #16-20, all day; green #20-22, evening; summer pupa #18-20 morning), Midges (#22-32, morning), Black Ants (#16-18, mid-day in fast water), Black Beetles (#16-18, mid-day), Flying Ants (#22-24, mid-day, when windy/humid), and Stone Hopper (#10-12, mid-day).

Housatonic River – with the addition of 4,100 “Survivor” Browns (3,100 10-12 inch fish and 1,000 12+ inch fish) in the Cornwall section of the Housatonic River Trout Management Area, fishing will be very good. Flows are very low, clear and easily wadeable, currently 128 CFS at Falls Village and 196 CFS at Gaylordsville). Morning water temperatures are currently in the low to mid 60's °F.

The area between the Route 4 bridge and Route 341 bridge is still offering great fishing with smallmouth and fallfish eagerly hitting a variety of poppers, dry flies, nymphs, and streamers. Patterns to try include White Zonkers, Wooly Buggers (go big- larval dobsonflies can be up to 4” in length and are a favorite food item), Muddlers, Grey or Black Ghosts (#4-10). Other insects include Fall Sulfurs (#16-18), Blue Wing Olives (#18-22), Tricos (#20-22), Leadwing Coachman (#10-12 evening, September is peak month), Sulfurs duns (#16-18, below the dam due to low temperatures, morning; afternoon to early evening for spinners), Light Cahill and Black caddis (#14-18, early morning & evening). Golden stonefly nymphs hatch at first light and adults egg-lay after dark. Try nymphing the pockets, deeper riffles and pool heads and don't forget streamers (morning & evening).

TROUT-LAKES & PONDS - Lakes reporting fair trout fishing include West Hill Pond, Highland Lake, East Twin Lake, Crystal Lake (Ellington) and Beach Pond.

CONNECTICUT RIVER

The River remains very low (making fishing in some places very difficult). **BLACK CRAPPIE** action is improving in the coves up and down the river. Target the backwaters with small shiners, silver grubs, or small Rapalas.

SMALLMOUTH BASS have been reported as hit or miss in from Hartford upstream. **NORTHERN PIKE** fishing is reported as good in the main stem and coves. Fish have been caught from the Hartford area downstream to Chapman Pond. **LARGEMOUTH BASS** are being caught (also hit or miss) in the Hartford to Haddam area. **CARP** are providing action in coves and in the mainstem (Hartford to Middletown area).

NOTES & NOTICES:

BASHAN LAKE (drawdown). Bashan Lake remains drawn down (slow refill continues – lake currently remains down approximately 4-5 feet – note that refill rate is dependent on rainfall amounts) following dam repairs and the state boat launch remains closed.

BRANFORD RIVER (boat launch). The Branford River state boat launch is currently closed for renovations. This closure is currently expected to last to November 14, 2016. Alternative nearby launch sites include the Guilford Town boat launch and the East River State boat launch, both in Guilford.

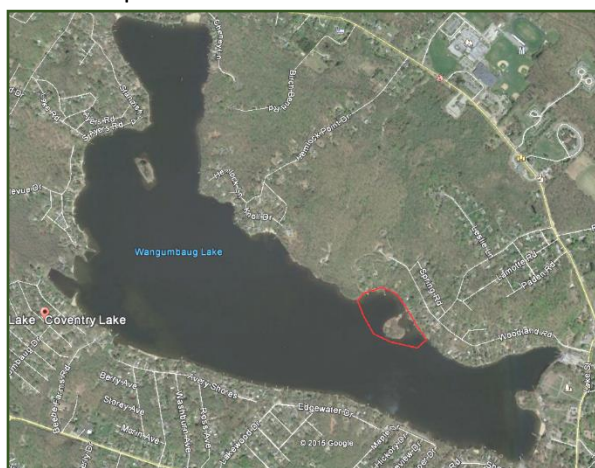
COLEBROOK RIVER LAKE (boat launch). Due to low water levels the **regular boat launch at Colebrook River Lake is closed**, however, an alternate location to launch from is available and can be used. Boaters should use extra care when launching and when out on the lake (remember that submerged objects such as tree stumps and rocks are much closer to the surface due to water levels). Boaters can call the U.S. Army Corps of Engineers (USACE) at 860-379-8234 for updated information.

CONNECTICUT RIVER (Hartford, rowing regatta). Riverfront Recapture will be holding the “**Head of the Riverfront**” rowing regatta on Sunday, October 2 (7 am – 5 pm) on the CT River in Hartford from Riverside Park to just upstream of the entrance to Wethersfield Cove. Boat travel through the course area will be difficult during the race events, use extra caution or avoid the area.

CONNECTICUT RIVER (invasive species alert). Hydrilla was recently found in the main stem Connecticut River in Glastonbury (near Glastonbury’s riverfront Park & Boathouse). See the Coventry Lake entry below for what river users should do to prevent spread of this invasive plant to other waterbodies.

COVENTRY LAKE (invasive species alert). Hydrilla, a very highly invasive aquatic plant, has been found growing in Coventry Lake. All lake users should take extra care to check and clean their boats (including canoes, kayaks and rowing sculls), trailers, and fishing equipment before leaving the boat launch, or leaving the lakeshore.

Coventry Lake (Wangumbaug Lake) boaters should avoid the area outlined in red to avoid fragmenting and spreading hydrilla. This is only area in the lake where hydrilla has been found.



DOOLEY POND (drawdown). A drawdown of Dooley Pond to facilitate dam repairs is ongoing (repairs are done, but refill rate will be dependent on rainfall). The state boat launch is currently closed.

GLASGO POND (drawdown). A drawdown of Glasgo Pond to facilitate dam repairs is ongoing (began September 2015). Launching of boats is difficult to impossible.

HANOVER POND (drawdown). A 6-foot drawdown of Hannover Pond (Quinnipiac River, Meriden) began on September 13 for the purposes of installing a small hydropower facility. The drawdown is likely to extend through the upcoming winter months. This pond has extensive shallow areas that are now exposed.

PHOTO CONTEST: Do you have the next Angler's Guide cover shot? Email us your high quality (high resolution) photos at Deep.inland.fisheries@ct.gov and include [photo contest](#) in the subject line. Deadline is November 1, 2016

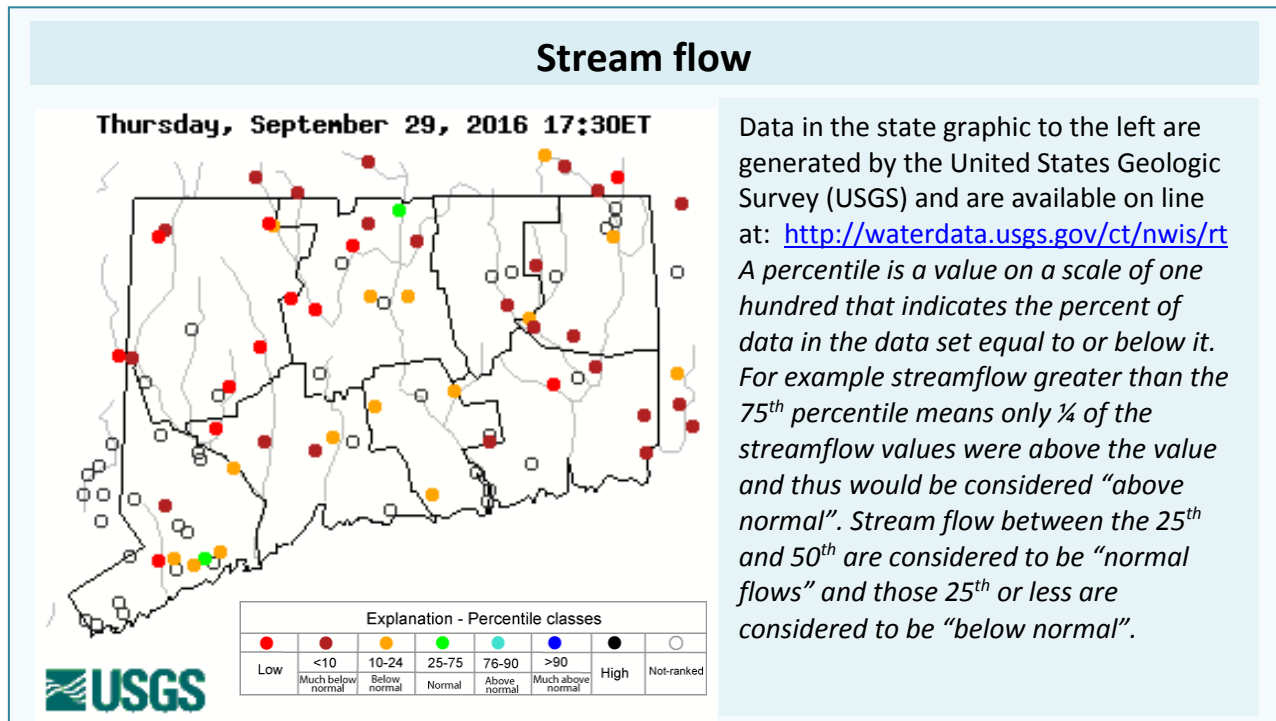
CT FISHIN' TIPS is our monthly e-newsletter dedicated to providing information, tips and pointers about fishing in Connecticut. Get CT Fishin' Tips delivered automatically to your in box by subscribing at www.ct.gov/deep/newslettersubscription

NEW! Youth Fishing Passport [Fishing Challenge Scorecard](#): Download the new scorecard for your Youth Fishing Passport Holder on the program web page at www.ct.gov/deep/yfp. Top anglers will receive a great prize pack of fishing gear.

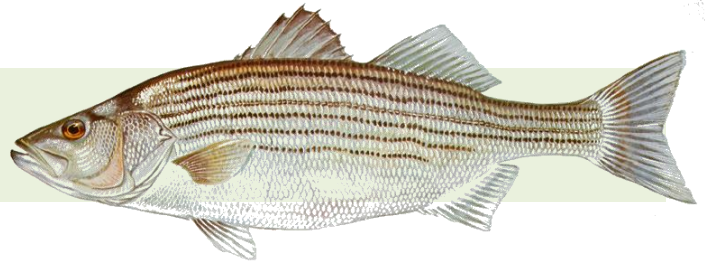
¡VOMONAS A PESCAR! Información disponible en español relacionada con la pesca en Connecticut.

Los folletos de la pesca en [aguas dulces](#) y [aguas saladas](#) fueron traducidos en español para la distribución a la comunidad hispana residentes en Connecticut. El objetivo de los folletos de pesca en español es para ayudar a fomentar, aumentar y promover la participación hispana en esta actividad que se lleva acabo en familia.

Somos afortunados en Connecticut por el gran abastecimiento de peses . La población de Connecticut tiene oportunidad de pescar a no más de 5 millas de su residencia. Si a usted le gusta la Trucha, Lobina, Lucio Norteamericano, Panfish o especies de aguas saladas como Lobina Rayada, Summer Flounder, Porgy o Anjova, las aguas de Connecticut lo ofrecen. ¡Vamonos a Pescar!



MARINE FISHING REPORT



Surface water temperatures in Long Island Sound (LIS) are in the low 70's °F. Check out the following web sites for more detailed water temperatures and marine boating conditions:

<http://www.mysound.uconn.edu/stationstat.html>

http://marine.rutgers.edu/mrs/sat_data/?nothumbs=1

<http://www.ndbc.noaa.gov/>

<http://www.wunderground.com/MAR/AN/330.html>

NEW SHARK REGULATIONS – EFFECTIVE MONDAY, AUGUST 22, 2016: An Atlantic Highly Migratory Species (HMS) permit is required to take, possess, or land any shark species, other than smooth or spiny dogfish, in this state.

To obtain an HMS permit visit: <http://www.greateratlantic.fisheries.noaa.gov/aps/permits/> or call NMFS Customer Service Center at (888) 872-8862. CT Marine anglers may encounter Sand Tiger and Sandbar (Brown) Shark which are protected and prohibited species and they must be released unharmed. **IF YOU DON'T KNOW, PLEASE LET IT GO!** [Coastal shark information](#).

Connecticut State Boundary Line in Long Island Sound. Anglers please note: Though Connecticut has reciprocity with neighboring states (New York, Rhode Island, Maine and Massachusetts), residents of Connecticut are required to have a CT Resident Marine Waters Sport Fishing License to fish in the Marine District.

WHALES AND SEALS - see check [WHALE WATCHING GUIDELINES](#). All marine mammals are protected by the Federal Marine Mammal Protection Act. Following these recommended operational guidelines helps minimize chances of harassing or injuring whales and violating Federal law. Guidelines apply to all large whales from Maine through Virginia, except North Atlantic right whales. It is illegal to approach a right whale within 500 yards (1500 feet) unless granted specific exemption or authorization.

STRIPED BASS fishing will improve as the NEW moon approaches. 'Tis the season for catching large (50 to 60 pound) migrating striped bass during the daytime, especially under overcast skies. Trolling weighted jigs (Chartreuse) with a yellow pork rind and or live lining bunker (Atlantic menhaden) in 15 to 40 feet of water. I like dunking a live eel on the reefs/shoal areas during the late afternoon /evening hours. This technique has produces some very big bass recently (52 inches – 48 pounds, (Outer Bartlett Reef/Norwalk Islands). Striper spots include the Watch Hill reefs, Ram Island Reef in Fishers Island Sound, lower Mystic and Thames River, the Race, Sluiceway, Plum Gut, Pigeon Rip, outer Bartlett Reef, Black Point, the "humps" south of Hatchett Reef, lower Connecticut River, Long Sand Shoal, Cornfield Point, Southwest Reef (outer), Sixmile Reef, Falkner Island area, the reefs off Branford, New Haven Harbor (Breakwalls) and the upper reaches, Charles Island area, lower Housatonic River, buoys 18 and 20 off Stratford Point, Stratford Shoal/Middle Ground, Milford Point, Penfield Reef, around the Norwalk Islands, and Cable and Anchor Reef.

STRIPED BASS ANGLERS FISHING IN RHODE ISLAND WATERS - are advised that the state of Rhode Island has adopted the following regulations pertaining to striped bass. These regulations apply to all Rhode Island state lands and waters including the waters around Block Island: **"Any person recreationally harvesting a striped bass thirty-four (34) inches or larger shall at the time of harvest have the right pectoral fin removed at a point as close to the body of the fish as possible."**

BLUEFISH fishing is quite honestly unbelievable. Go out there and catch one of hardest fighting fish in the sea. They can be found throughout the Sound (you got to find the birds). Large numbers of bluefish are cruising the lower estuaries, rivers and beaches feeding on menhaden/anchovies. The "Top-water" bite continues to be very good (look for the "blow-ups". Bluefish fishing spots include the reefs off Watch Hill, the Race, Thames River, Sluiceway, Plum Gut, Pigeon Rip, lower Connecticut River, Long Sand Shoal, Sixmile Reef, Falkner Island area, New Haven Harbor and upper reaches, lower Housatonic River, buoys 18 and 20 off Stratford Point, Stratford Shoal/Middleground, Penfield Reef, Norwalk Islands and Cable and Anchor Reef.

SNAPPER fishing is still better in the western sound (Milford to Greenwich) with fish measuring 5 to 12 inches in length.

BLACK SEA BASS fishing is heating up with the fall bite/migration on. Hit every favorite wreck/reef/hump, to find good numbers of these tasty bottom fish. Better yet, plan a trip on a party/charter boat trip to fish between Block Island and Montauk...there are many giant-sized (4 – 6 pounds) sea bass out there. Eastern Sound (Fishers Island to Block Island and northeast of Montauk) anglers are having better success. For those willing to travel, Block Island Sound is the place to be for humpback sea bass. Closer to home, the rocky reefs from Niantic, to Branford (Falkner Island) and Fishers Island have been consistent all season. A reminder to all anglers...if you are fishing in water deeper than 100', barotrauma can cause released fish to struggle to make it back to the bottom. A descending devise such as the Shelton Fish Descender can help assist the sea bass air bladder to recompress and get safely back down to the depths. See Fishsmart.org for more information.

SUMMER FLOUNDER (fluke) fishing is **Closed** in CT

SCUP (porgy) fishing is still the best bet in town. All the party boats are targeting them...that's how plentiful they are. Spend time chumming...this will improve your success. Try these nice shore fishing areas (incoming tide better); Morningside, and Woodmont (Milford), Coast Guard Jetty at Southport Beach, Rick Jetty at Calf Pasture beach, South Benson Fishing Pier, Sherwood Island, Pleasure Beach Fishing Pier, St Mary's by the Sea, Gulf Beach Pier, Bonds Dock (Stratford) and Stratford wall along with Long Beach (excellent shore spots). Other shore spots include The Sound School Fishing Pier/Dock, Rocky Neck State Park, Harkness Memorial State Park, Meigs Point, Hammonasset, Sherwood Island State Park, Charles island and Fort Trumbull State Park. Fish during the high tide at these shore locations. Locate your favorite Enhanced Shore Fishing Opportunities for these hard fighting and excellent eating "Reef Slammers".

ATLANTIC BONITO & LITTLE TUNNY fishing is very good throughout the sound. These small tunas are fast movers, quickly moving to different locations to locate them is important. However, the action in CT is heating up and many fish have moved into the central/western Sound. Still some big catches of these small tunas have been reported from Pine Island, Bluff Point, Groton Long Point and points west from Milford, Norwalk to Darien. Shore anglers are scoring at Ocean Beach, Seaside Park, Harkness Memorial , Hammonasset, Rocky Neck State Park and also at Sherwood Island State Park. These small tunas are also cruising around from Pt. Judith, Watch Hill to Bluff Point (including Fishers Island Sound), the Race to Little Gull Island, from Bartlett Reef to Black Point. Dawn and dusk is typically the best time to fish for these inshore tunas but they can be caught during the daytime. They are feeding heavily of young of the year transparent anchovy. Try casting metal (heavy) lures (Swedish pimple, albie snacks and Epoxy jigs) to

feeding fish on the surface. A quiet approach and finding birds (gulls/terns) actively feeding is the key to a successful trip. Jigging for them also works when they are close to the bottom.

WEAKFISH fishing is surprisingly good in the central and western sound. Falkner and Goose Island area is producing some very nice “tide runners”. Many scup/seabass anglers are catching them while bottom fishing. Fish up to 26 inches are being reported from West Haven Beaches/Charles Island area to Norwalk. Also, look for weakfish in Guilford/Madison/New Haven Harbor areas.

HICKORY SHAD fishing is good in the Black Hall River, Norwalk River and fair in the Lieutenant River, Housatonic River, Norwalk Harbor and the lower Connecticut River (DEEP Marine Headquarters fishing pier). Anglers are still waiting for the fall bite to happen, especially shore anglers. Fishing remains good at Fort Trumbull, Black Hall, Clinton Harbor River systems and the lower Connecticut River (DEEP Marine Headquarters fishing pier).

BLUE CRAB fishing is slowing down in the tidal creeks/bays/piers. Many of the large “jimmies” are still up river and have not migrated down. Crabs can still be found climbing the pilings in the evening, especially with an incoming tide. Remember, all egg-bearing females must be released without avoidable injury. Minimum carapace length is 5 inches for a hard shell crab. Legal gear types include: scoop (dip) net, hand line, star crab trap, circular (topless) trap not exceeding 26 inches in diameter. Maryland Style Crab traps are prohibited. Chicken with the skin on it (along with a long handle net) is the preferred method to capture these tasty crabs. For more information please see the [Blue Crab Fact Sheet](#) on our website.

GOT A FISHING REPORT - PLEASE EMAIL US AT deep.marine.fisheries@ct.gov

NOTABLE CATCHES:

[CAUGHT A TROPHY FISH? - TROPHY FISH AWARD PROGRAM AFFIDAVIT link](#)

<i>Species</i>	<i>Length (in.)</i>	<i>Weight (lb)</i>	<i>Angler</i>
Bluefish	38"	18 lbs. 4 oz.	Jack Wallace
Striped Bass	39"	C&R	Marina Molnar
False Albacore	24"	7 lbs. 10 oz.	Jim Fredette
Black Sea Bass	25.5"	5 lbs. 12 oz.	Todd Wilson

For **Current Connecticut Recreational Fishing Regulations**: Anglers should consult the 2016 Connecticut Anglers Guide which is now available at most Town Clerks Offices, DEEP offices and at tackle stores selling fishing licenses. Current regulations, electronic versions of the Angler's Guide and additional information can all be accessed on the DEEP website at: www.ct.gov/deep/fishing.

The Connecticut Department of Energy and Environmental Protection is an Affirmative Action/Equal Opportunity Employer that is committed to complying with the requirements of the Americans with Disabilities Act. Please contact us at (860) 418-5910 or deep.accommodations@ct.gov if you have a disability and need a communication aid or service; have limited proficiency in English and may need information in another language; or if you wish to file an ADA or Title VI discrimination complaint.

DEEP WEEKLY Fishing Report



Connecticut Department of ENERGY & ENVIRONMENTAL PROTECTION

79 Elm Street, Hartford, CT 06106
www.ct.gov/deep

Striped Bass image courtesy Duane Raver/USFWS.